

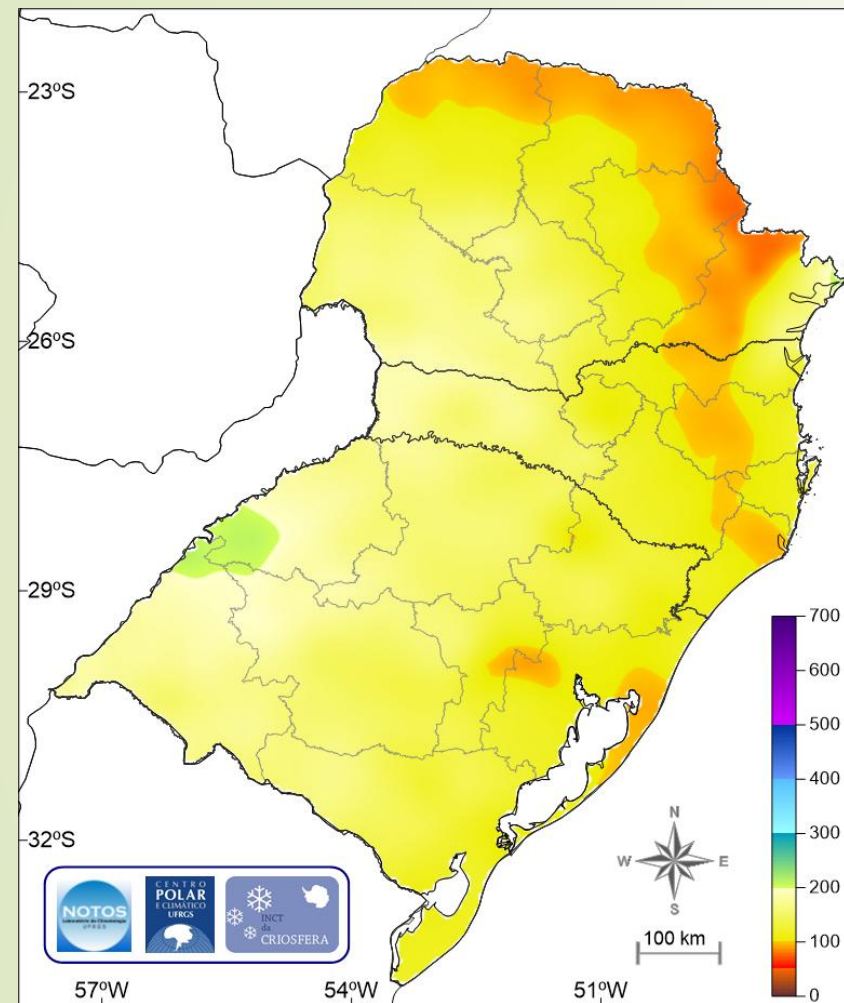
Boletim Climático da Região Sul do Brasil

Abril/2026

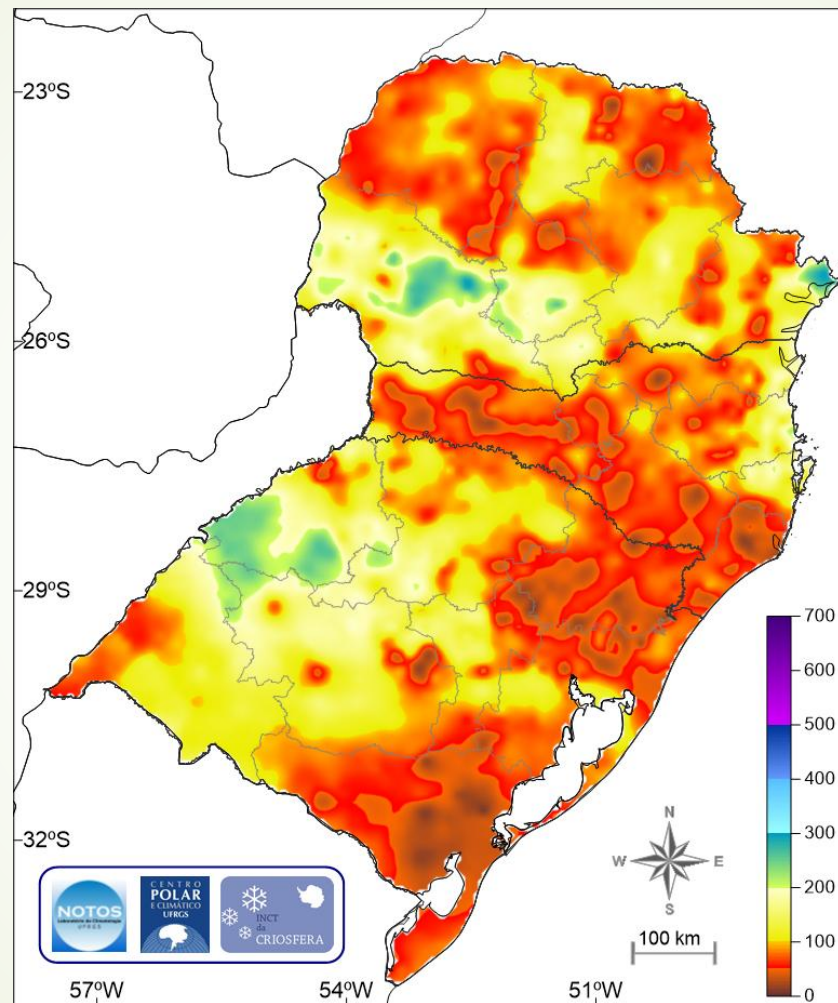
Projeto e execução: Dr. Denilson Ribeiro Viana

Supervisão: Prof. Dr. Francisco Eliseu Aquino

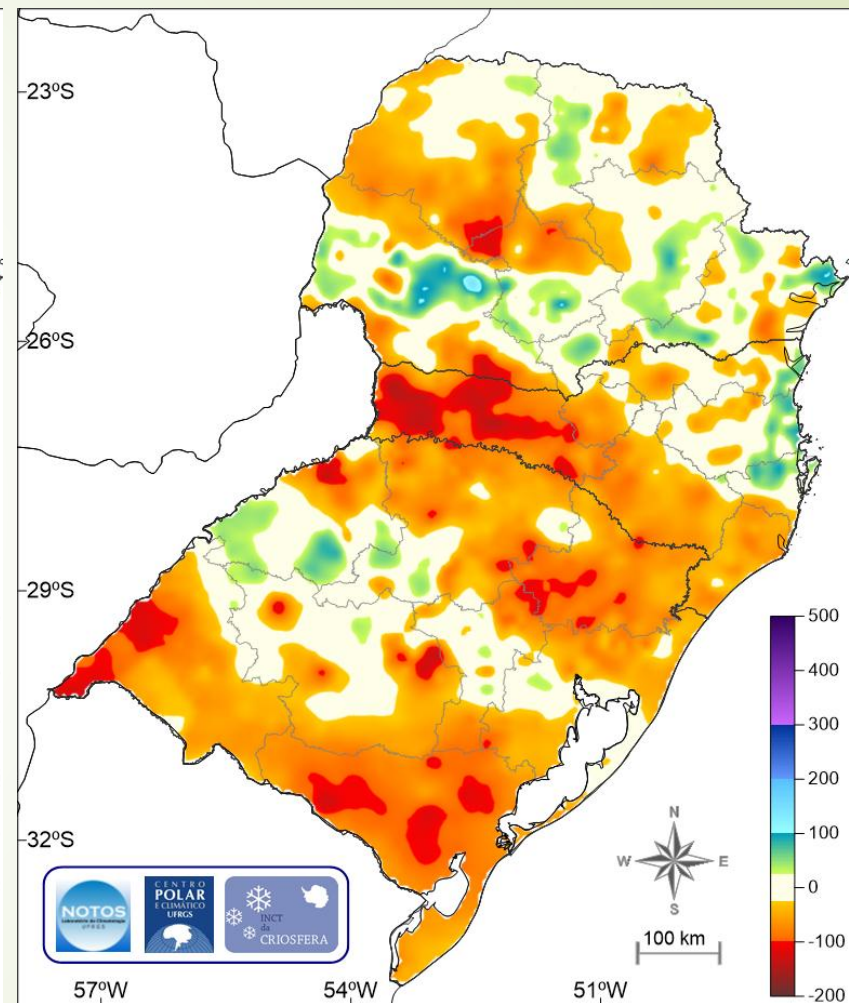
Precipitação (mm) Região Sul do Brasil – Mês: Abril/2026



Climatologia 1981-2010 (GPCC)

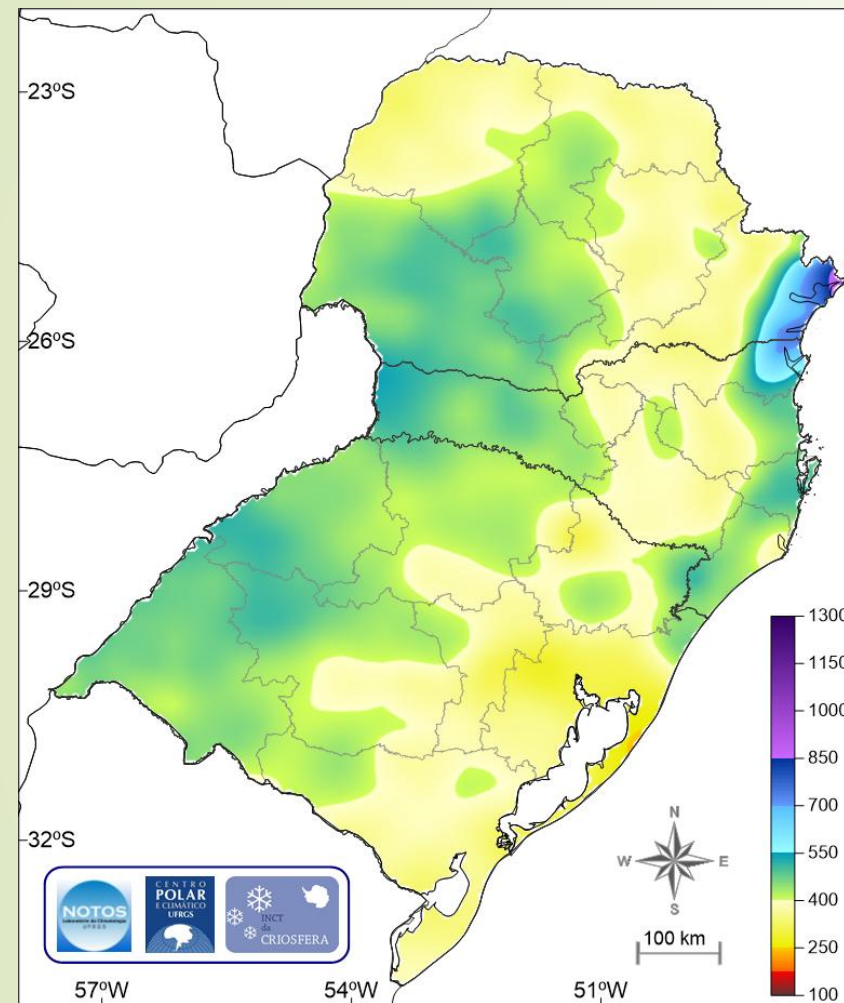


Observado MERGE (CPTEC/INPE)

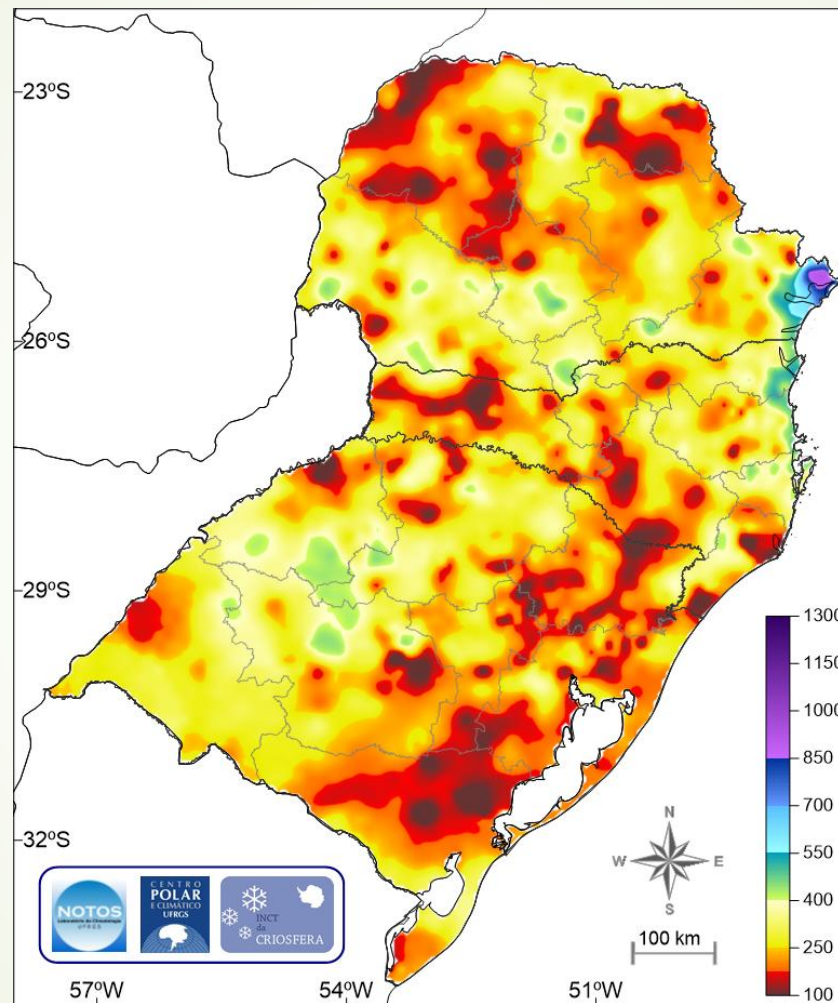


Desvio (Observado – Climatologia)

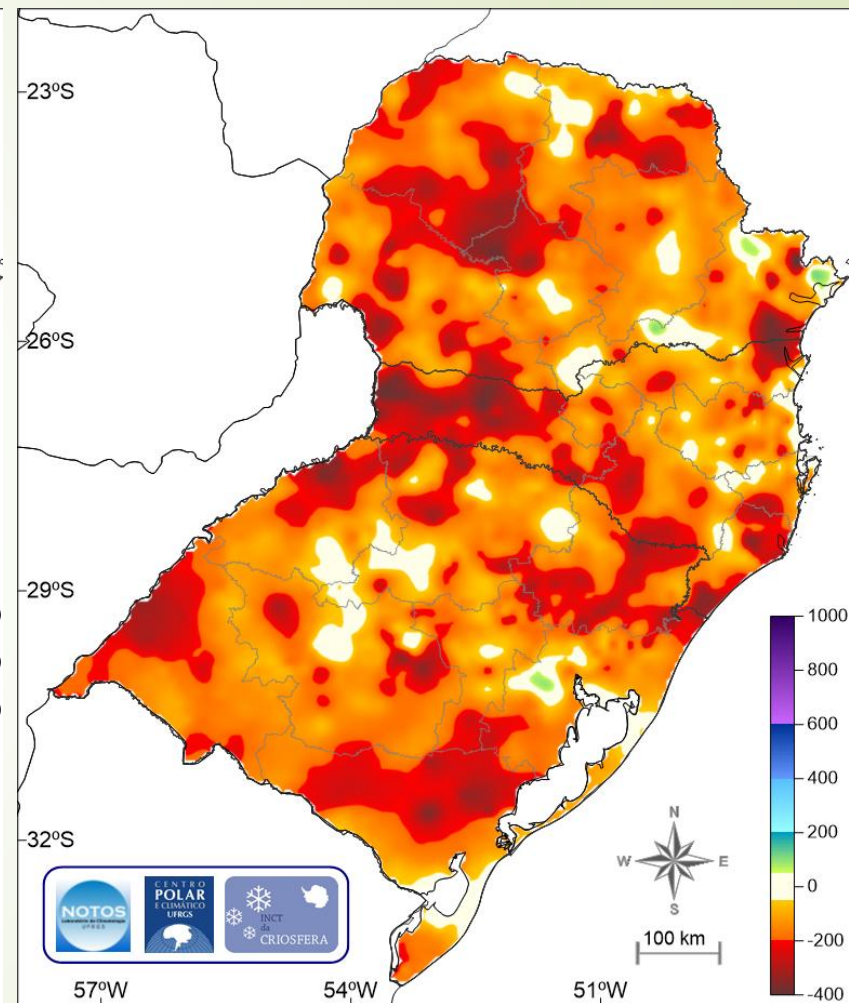
Precipitação (mm) Região Sul do Brasil – Trimestre: FMA/2026



Climatologia 1981-2010 (GPCC)

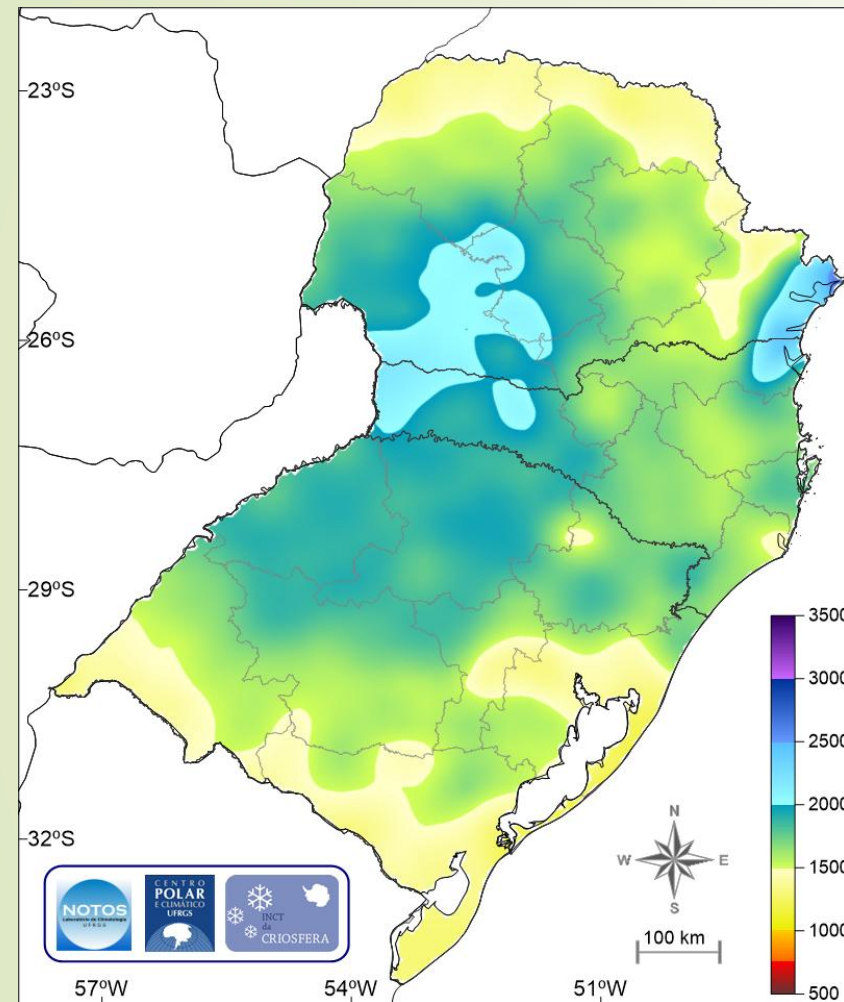


Observado MERGE (CPTEC/INPE)

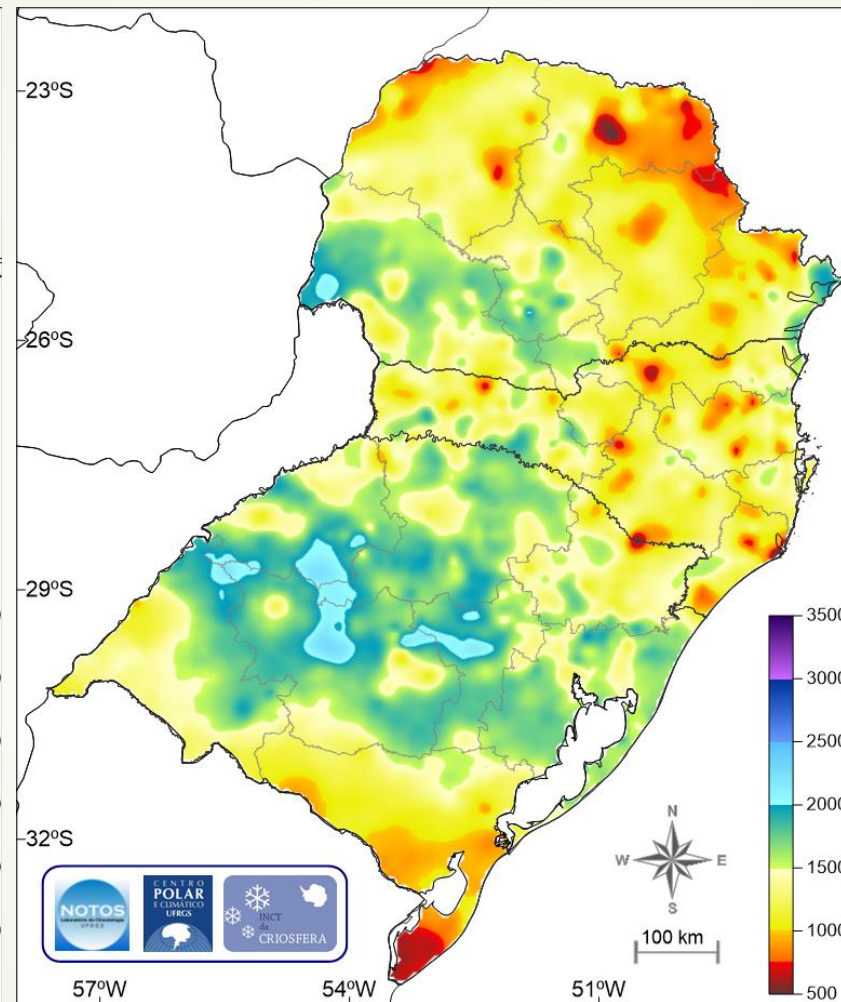


Desvio (Observado – Climatologia)

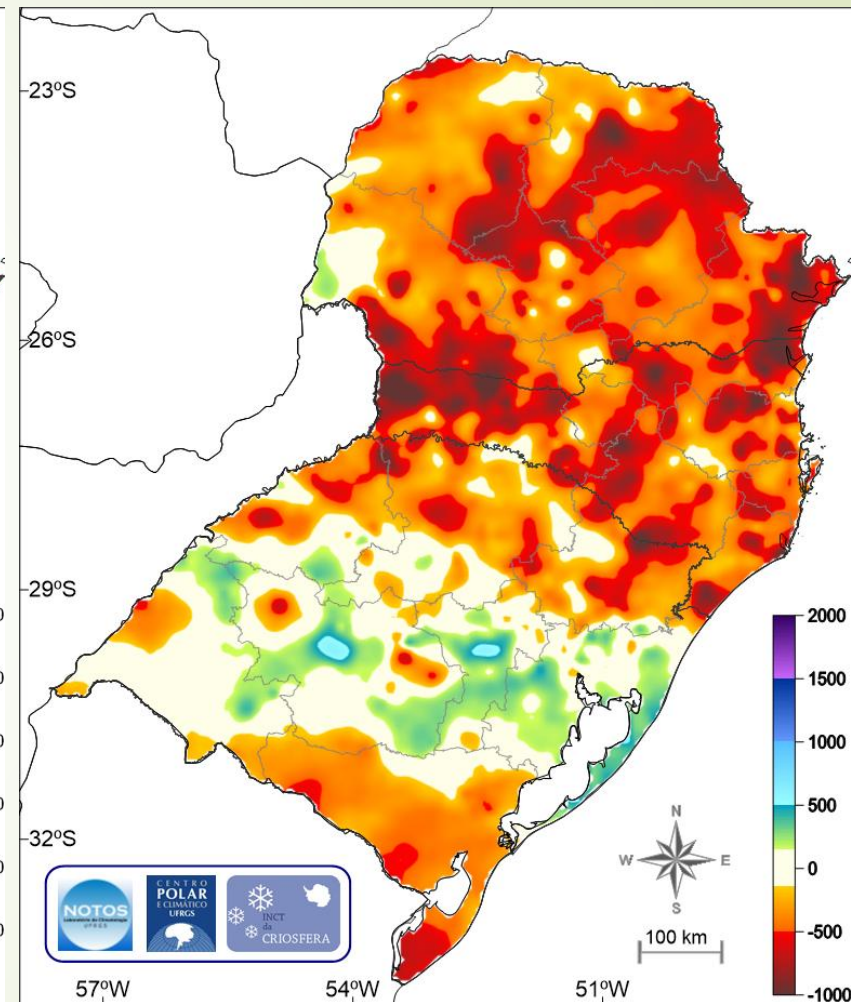
Precipitação (mm) Região Sul do Brasil – Ano: Mai/2025 a Abr/2026



Climatologia 1981-2010 (GPCC)

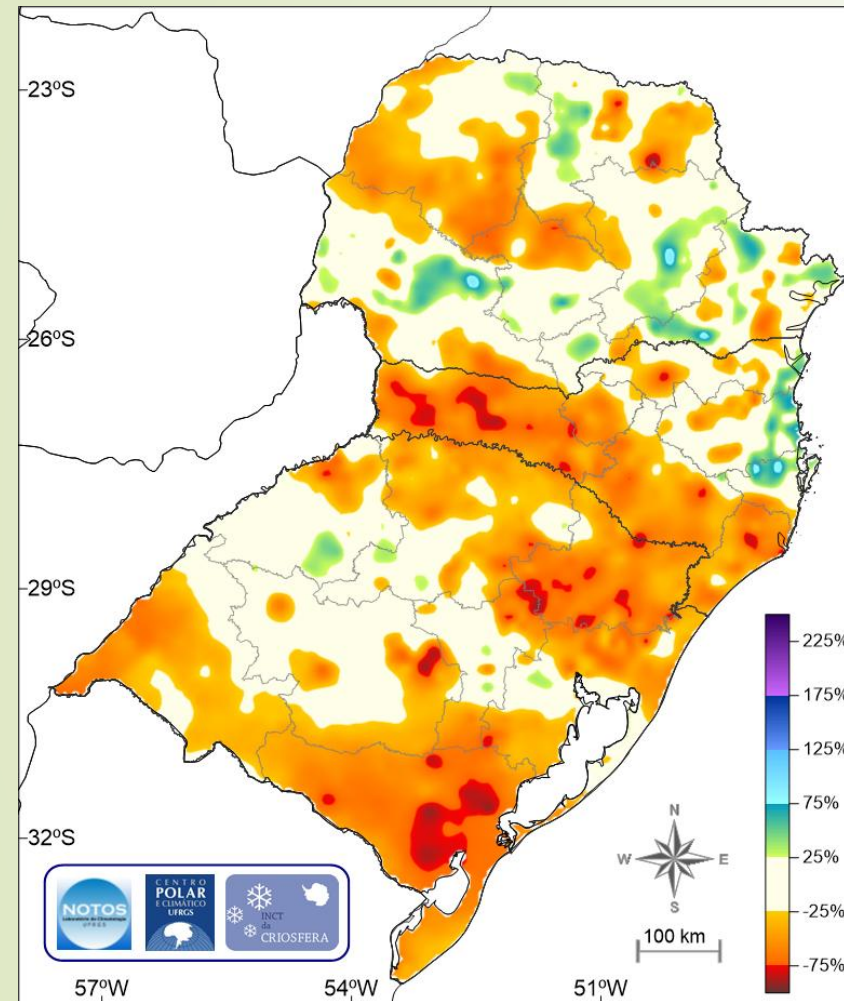


Observado MERGE (CPTEC/INPE)

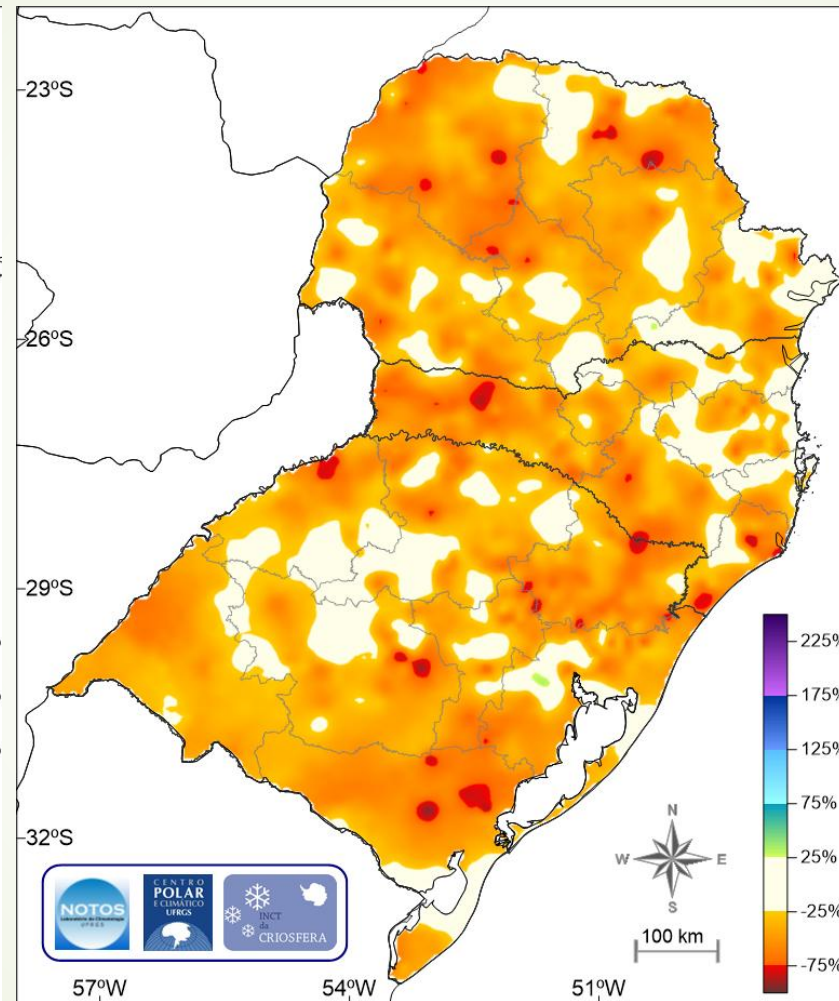


Desvio (Observado – Climatologia)

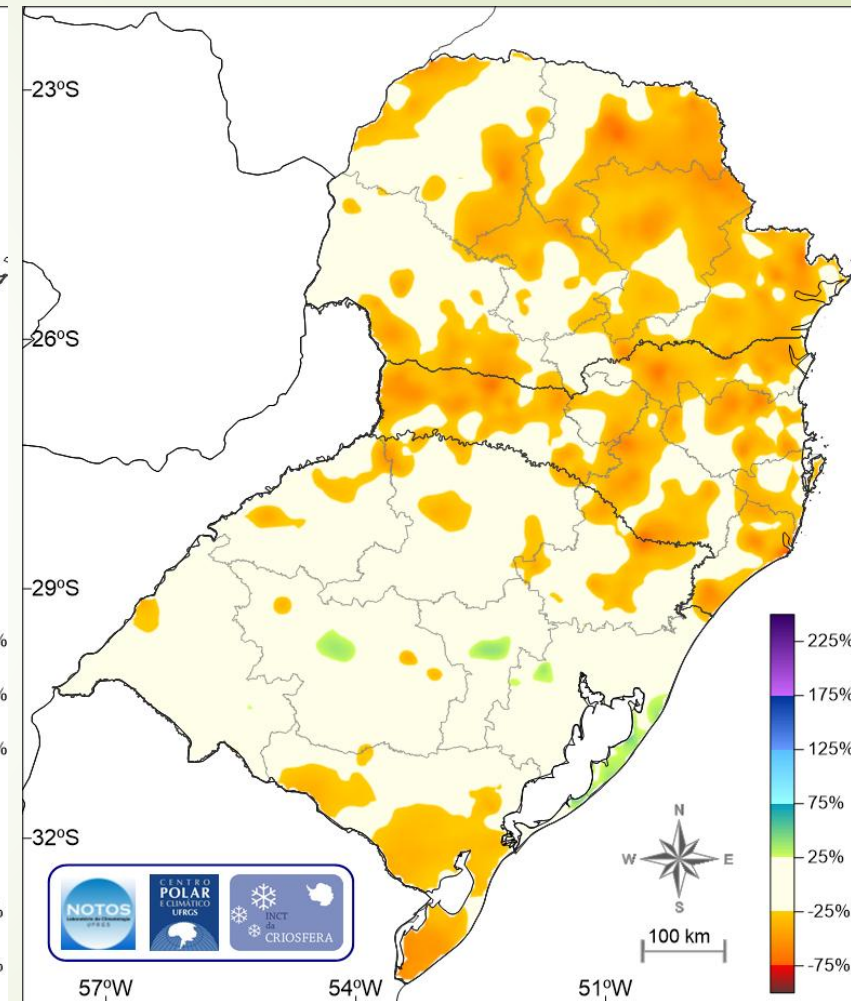
Desvios de Precipitação (%) Região Sul do Brasil



Mensal – Abr/2026 - MERGE/CPTEC
(Climatologia GPCC – 1981-2010)

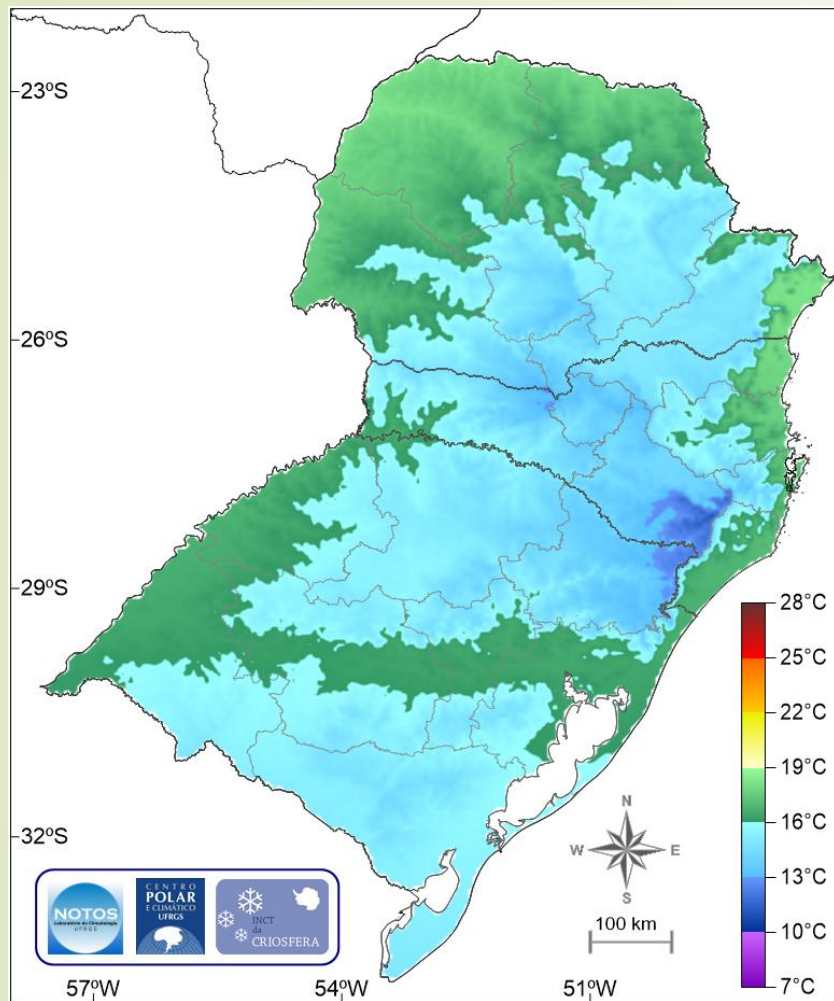


Trimestral – FMA/2026 - MERGE/CPTEC
(Climatologia GPCC – 1981-2010)

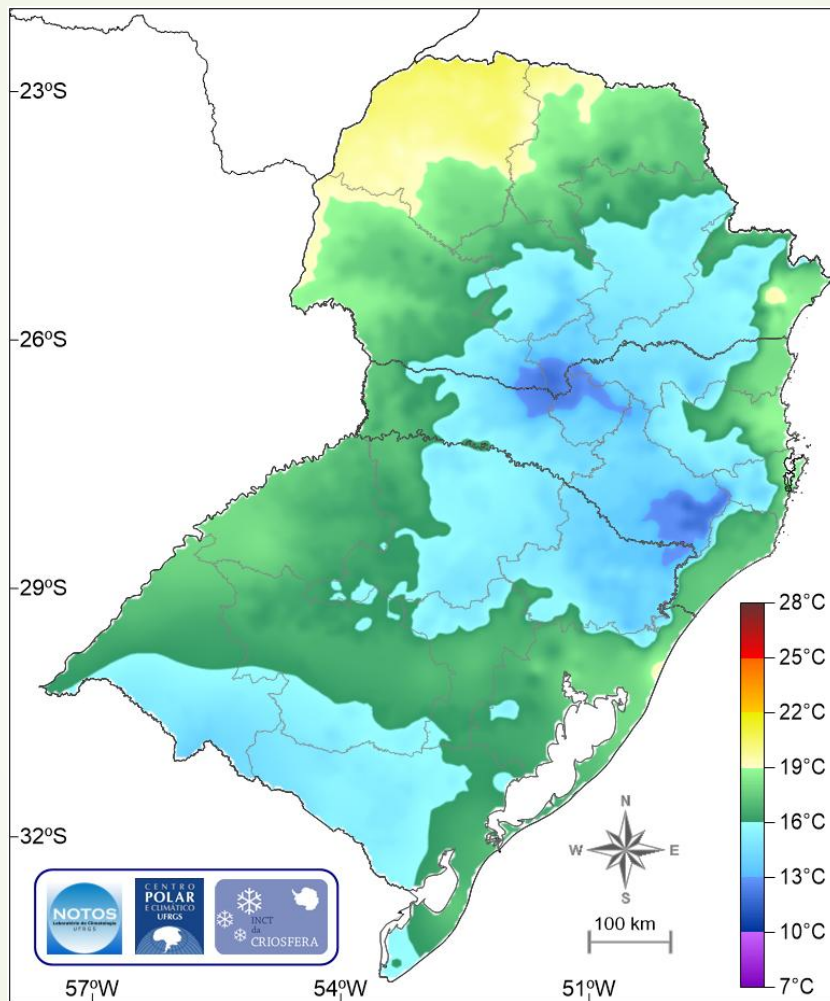


Anual – Mai/2025 a Abr/2026 - MERGE/CPTEC
(Climatologia GPCC – 1981-2010)

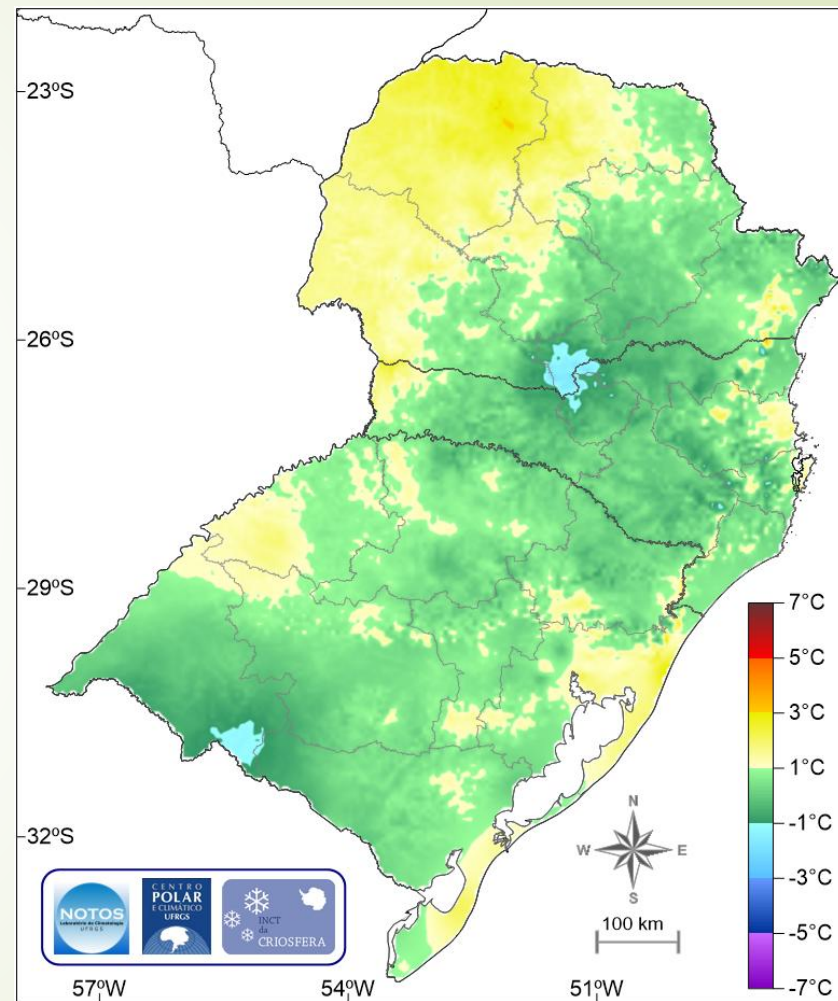
Temperatura Mínima (°C) Região Sul do Brasil – Mês: Abr/2026



Climatologia 1981-2010 (CRU/SRTM)

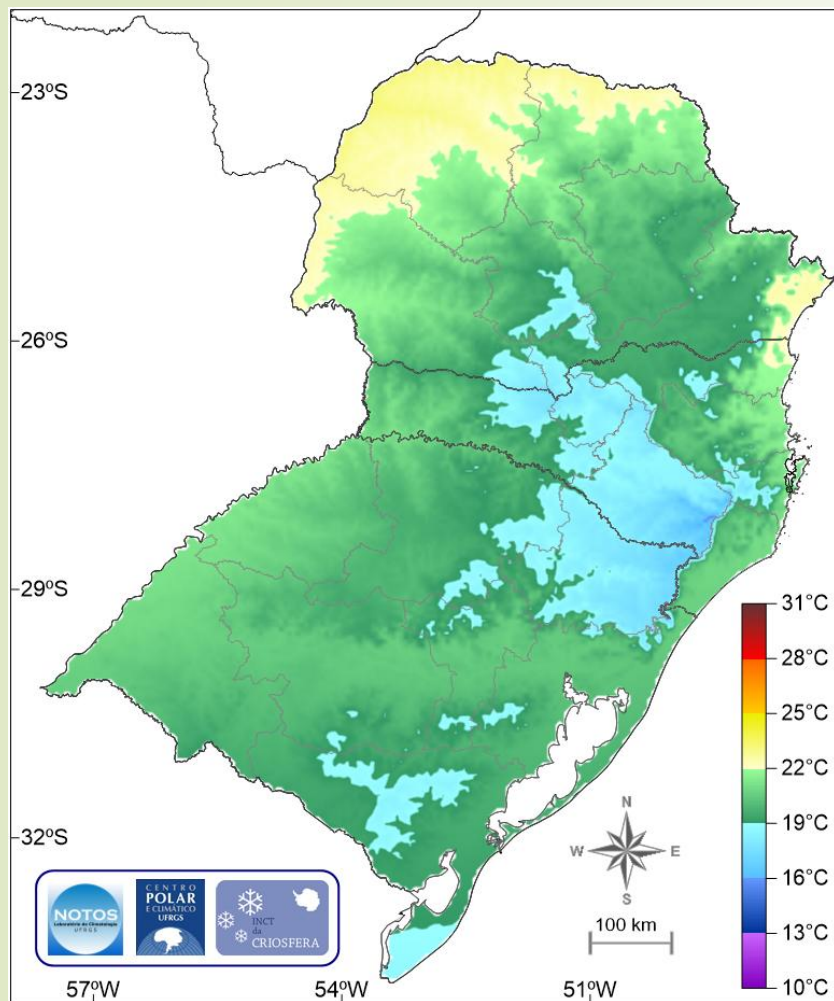


Observado SAMeT (CPTEC/INPE)

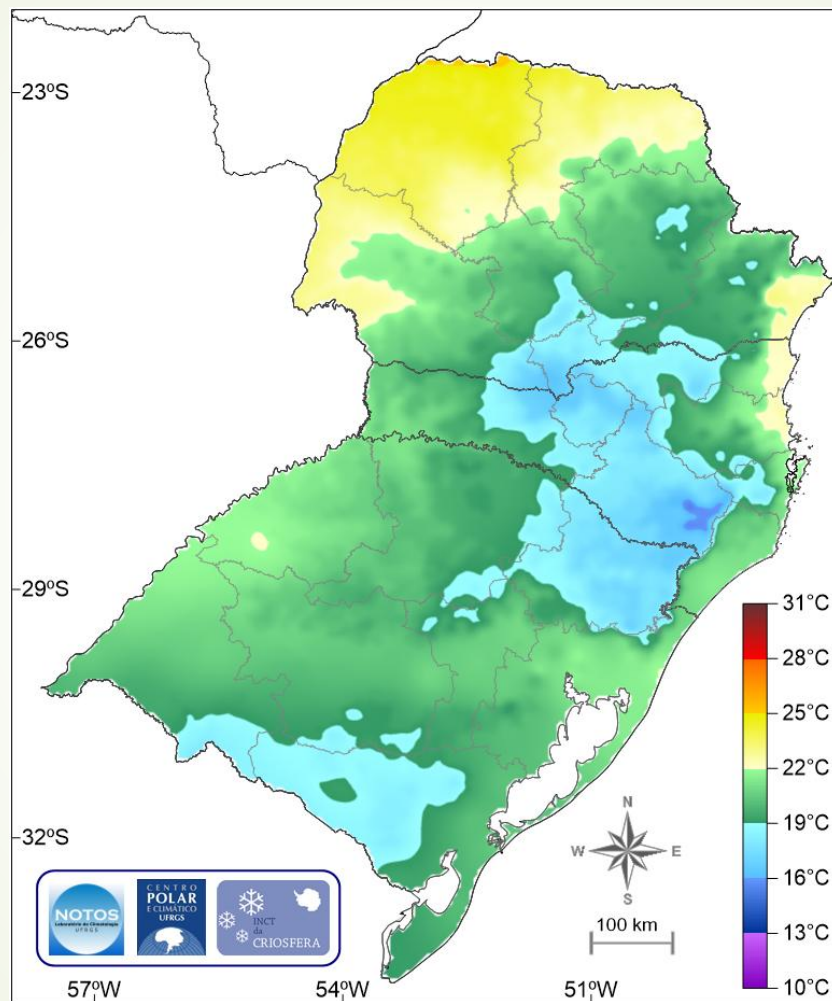


Desvio (Observado – Climatologia)

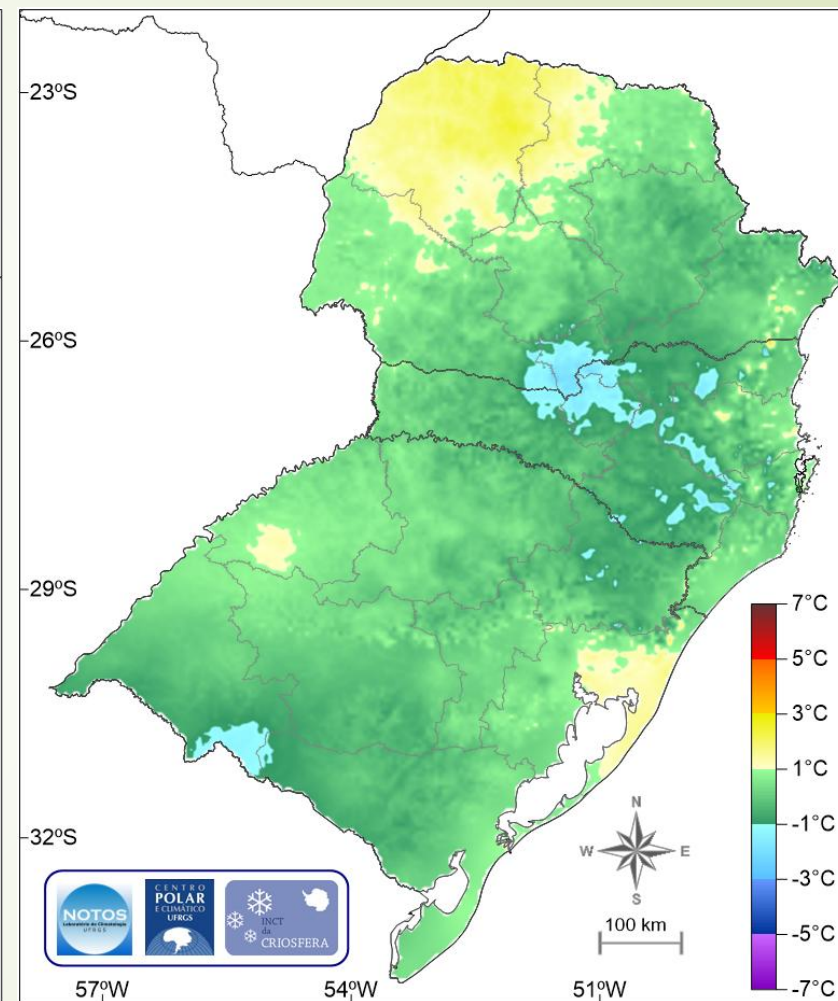
Temperatura Média (°C) Região Sul do Brasil – Mês: Abr/2026



Climatologia 1981-2010 (CRU/SRTM)

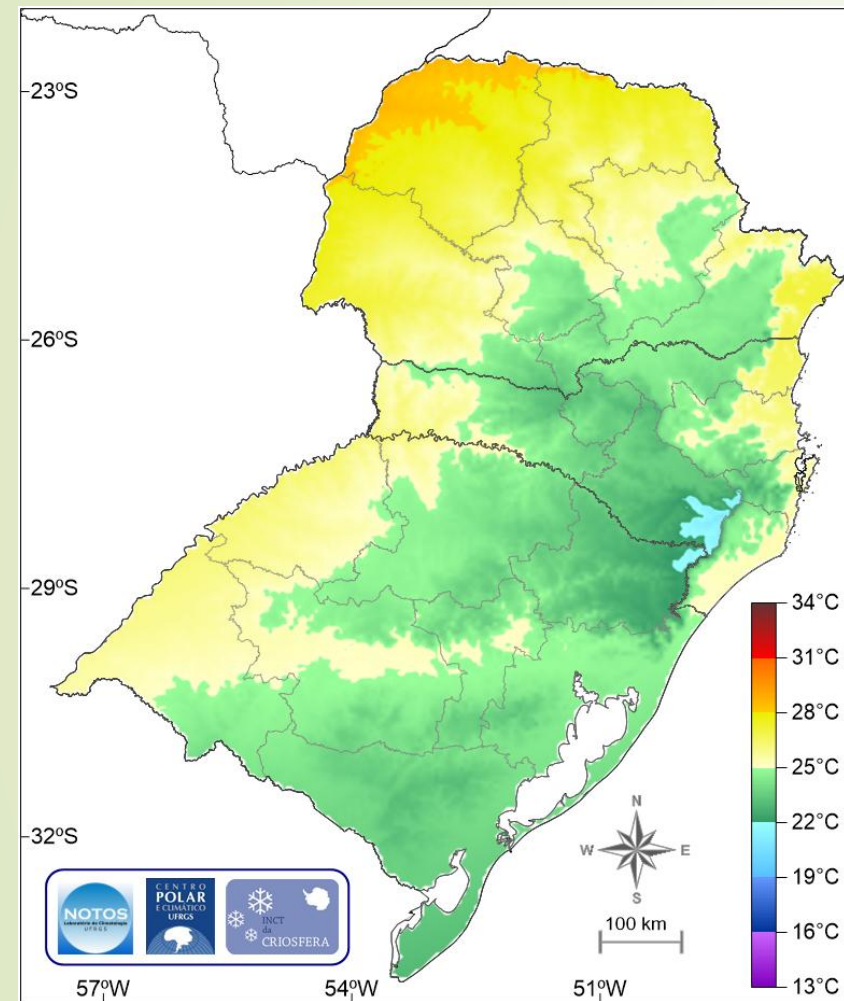


Observado SAMeT (CPTEC/INPE)

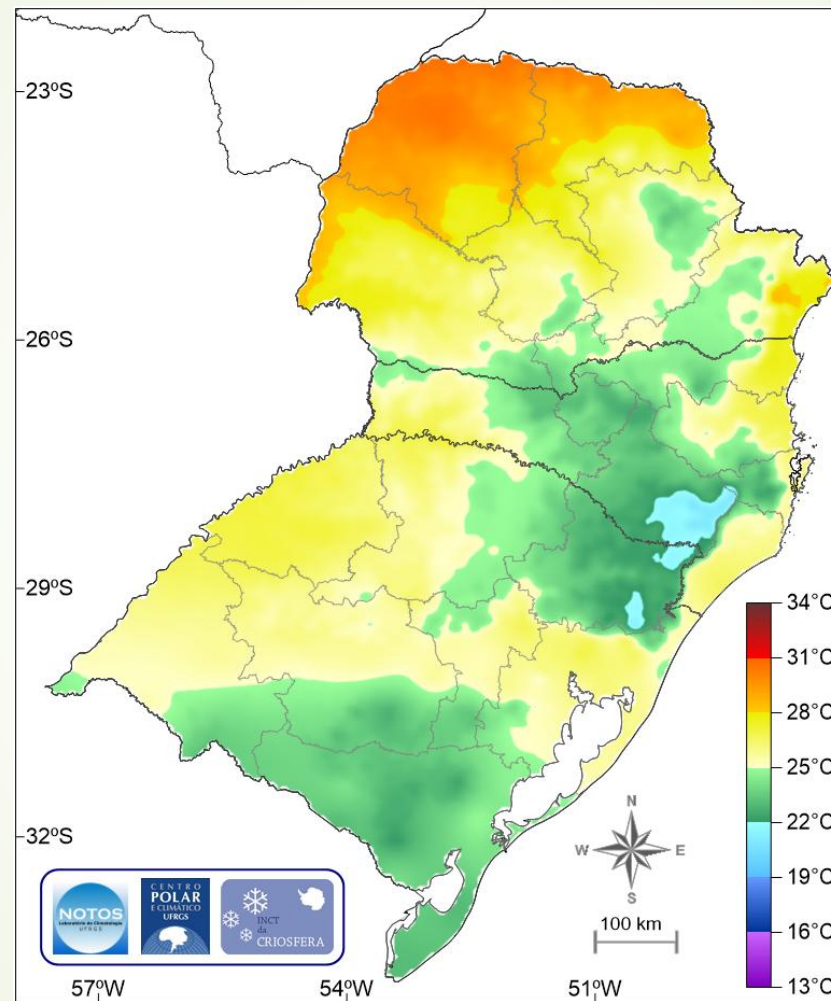


Desvio (Observado – Climatologia)

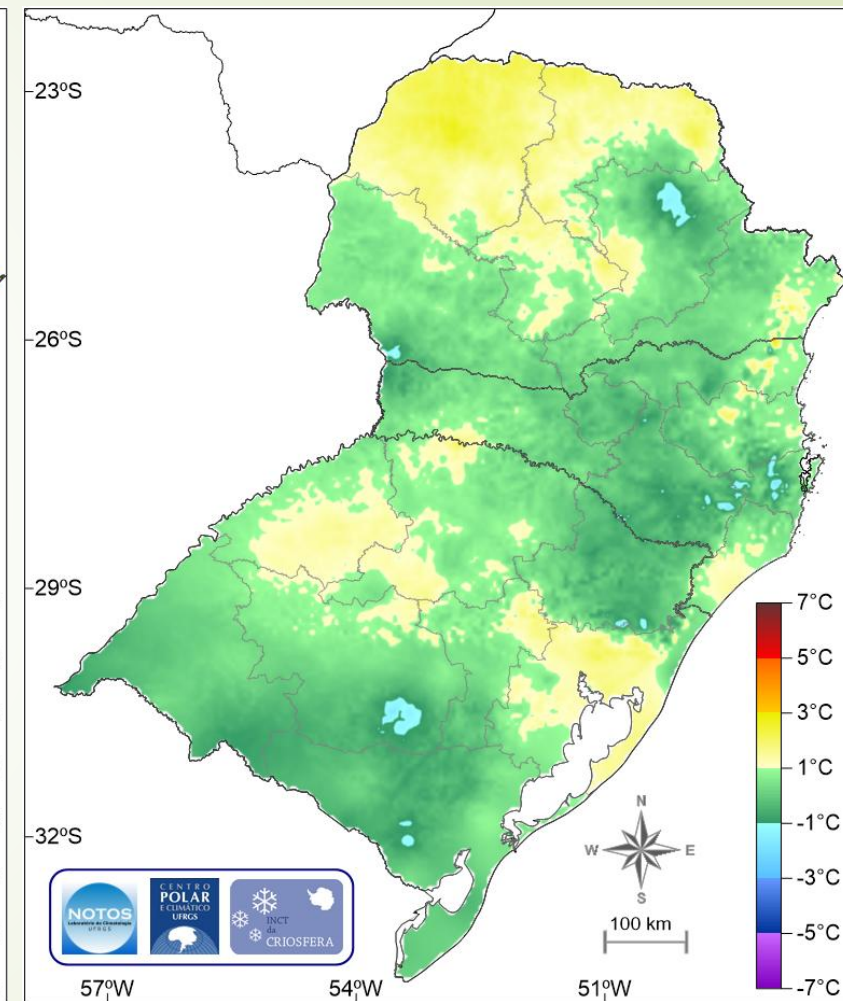
Temperatura Máxima (°C) Região Sul do Brasil – Mês: Abr/2026



Climatologia 1981-2010 (CRU/SRTM)



Observado SAMeT (CPTEC/INPE)



Desvio (Observado – Climatologia)